

Ultra Tool & Manufacturing continues to be a leader in manufacturing, tooling and automation for over 45 years because we deliver cost-effective solutions. Forming relationships that work creates a unified approach to each project no matter its size or complexity. Knowledge and experience developed within our organization and a strong commitment to technology allows us to better understand and meet customers' needs.

We differ from other contract stamping houses in that we not only build our own tooling, but we also build tooling for OEM stampers. We do this to learn new, cost effective methods of building stamping dies. **We differ from other tool builders** because we apply the knowledge learned in our pressroom to your tooling project. **We differ from other fabricators** because we can accommodate changing production demands by transitioning from low volume, fabricated parts to high volume, stamped parts when needed.

ENGINEERING SERVICES

We excel at helping our customers take cost out of their product with our up front engineering assistance. We supply input that makes your parts easier to produce while gaining the best material utilization.

Our experienced engineers use state-of-the-art *VISI Progress Die Design* software to deliver complete and accurate die, gauge and fixture designs in 3-D. Our team of engineers, tool makers themselves, will provide die designs engineered to ensure reliable production runs for the life of your product.

ABOUT US

- Company founded in 1969
- Based in Germantown, WI (a suburb of Milwaukee)
- Number of employees: 100+
- Certification: ISO 9001:2008
- Key Industries served: Recreational Vehicle, Electrical, Defense, Consumer Products, Automotive and Small Engines
- Our facility: 126,500 square feet



VISIT WWW.ULTRATOOLMFG.COM

TO REQUEST A QUOTE:

PHONE: 262-703-0455 | **EMAIL:** info@ultratoolmfg.com | **WEBSITE:** www.ultratoolmfg.com/contact/request-a-quote



Production Metal Stamping

We operate clean, professional, well-organized facilities that follow 5S lean initiatives. Our 12 punch presses range from 45- to 800-ton capacity producing volumes from 10,000 to millions of parts. Our state-of-the-art sensor system reduces tool downtime, eliminates defects and protects against crashes. Plus we offer an extensive range of value-added operations.

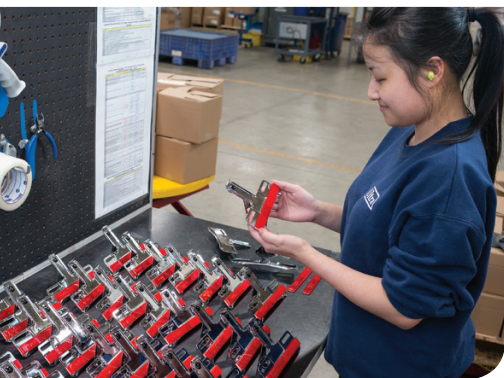
Fabrication

High Speed Fiber Optic Laser Technology makes the fabrication process accurate, flexible and cost effective. It allows us to quote your low volume job at a lower price than typical stamped parts because of lower operating costs, lower maintenance costs and no tooling costs. We can cut virtually any metal including aluminum, brass, copper and stainless steel with unprecedented repeatability.



Value-Added Services

Our value-added services include assemblies, kitting, secondary machining, metal finishing, welding (robotic and spot welding), hardware (PEM) insertion, etc.

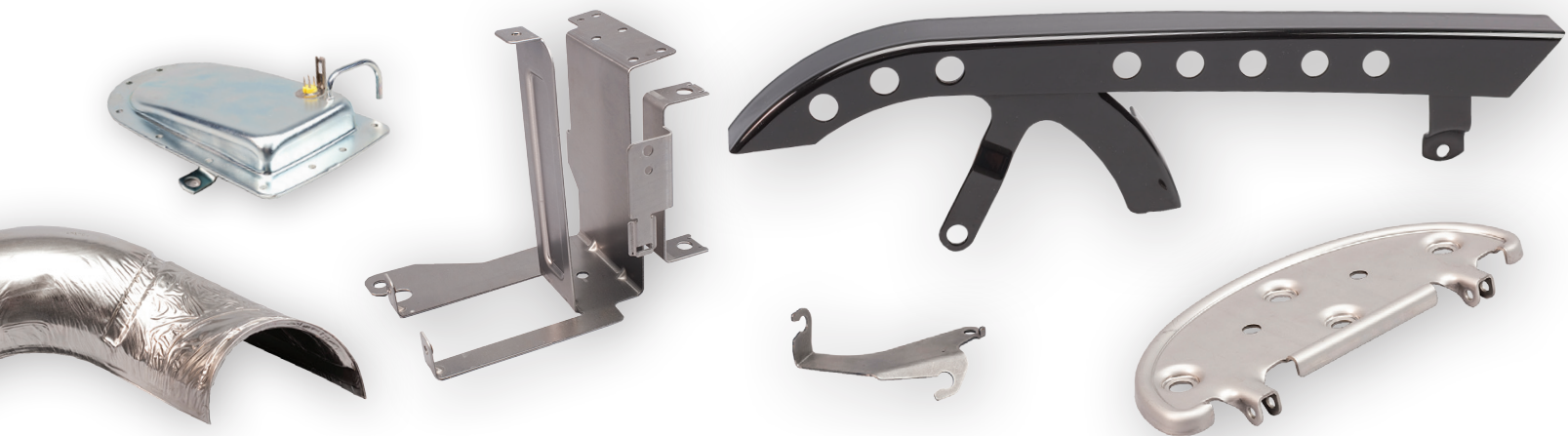


Prototyping

Using simple form dies and laser cut blanks, we can deliver a wide variety of parts from simple flat parts to complex drawn parts.

Contract Tooling

Our specialty is dies up to 168" long, all metals up to 800 tons.



ISO 9001:2008 CERTIFIED

FORMING RELATIONSHIPS THAT WORK.

Video Tour:

Watch a walk-through video tour of our facilities.



W194N11811 McCormick Drive
Germantown, WI 53022
WWW.ULTRATOOLMFG.COM

PHONE: 262.703.0455
FAX: 262.703.0468
EMAIL: info@ultratoolmfg.com